

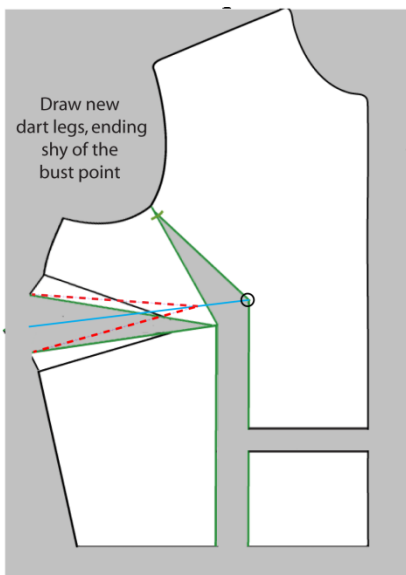
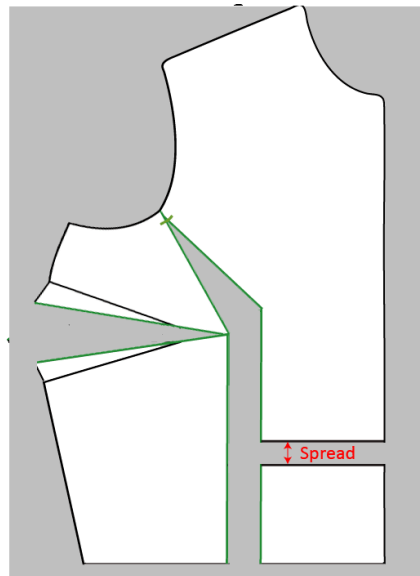
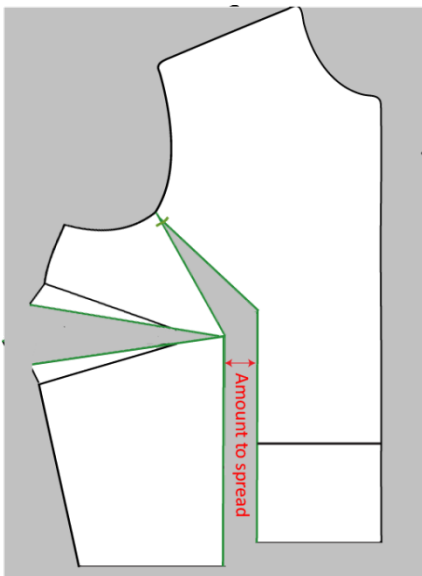
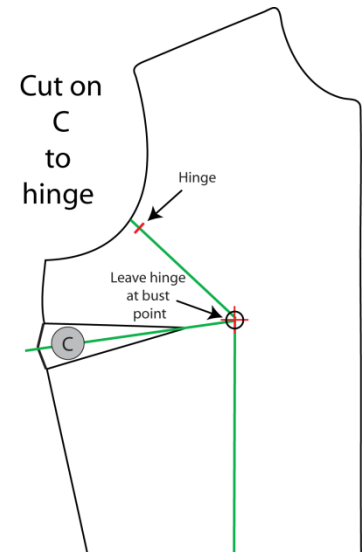
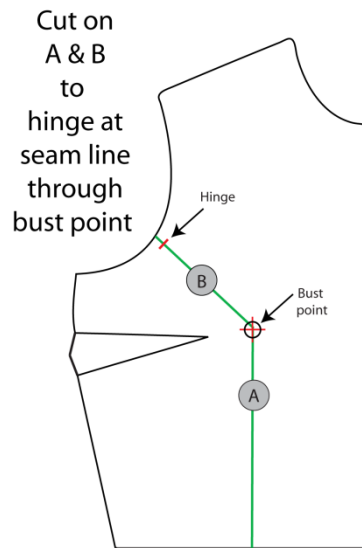
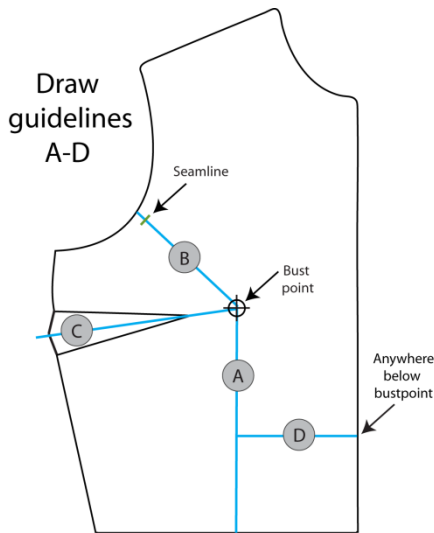
Bust Adjustment Quick Visual Reference

Copyright Diane McCauley
May 2019, Central Iowa Chapter ASG

My measurements:

Shoulder to bust point _____"

Bust point to bust point _____"



General Guidelines for end of bust dart legs

A-C cup 1" from bust point
D cup 1 1/2" from bust point
DD cup 2" from bust point
larger than D 2" or more

Finish

Fold out dart in pattern as it will be pressed & cut to create dart extension. Blend seams & check lengths. Pin. Try on. Adjust. Sew!

How much do I spread or overlap?

The amount you will spread for FBA will be half the difference between your high bust and full bust measurement.

Full bust Measurement _____

minus

High bust measurement _____

Difference _____

Divide by 2

Amount to spread _____

Or, use these *general* guidelines:

A - 3/8"

C +1/2"

D +3/4"

larger than D +1-1/4" or more

Alternately, if you made a muslin, measure the gap or overlap at the bust line level at center front and spread half of that amount.

Some judgment can be used based on the style, type of the garment or fabric choice.