

American
Sewing
Guild



Central Iowa Chapter

Member Tips

November 2020

Stretch Mesh Adds Recovery

- Inspired by “Fabric Lab: Stretch Mesh” by Sandra Betzina in Threads #201
- Fine knits that have no recovery and may distort quickly
- Use a layer of stretch mesh in the cuffs, neckband, and hem
- Does not affect hang of the garment
- “Power Mesh” found online or at JoAnn’s in sport/active knits; variety of densities and colors available



A Yardstick Steam Roll

- Pressing technique for long side seams or inner seams
- Place under the seam allowance
- Prevents unwanted pressed wrinkles
- Wooden yardstick absorbs the steam from the iron

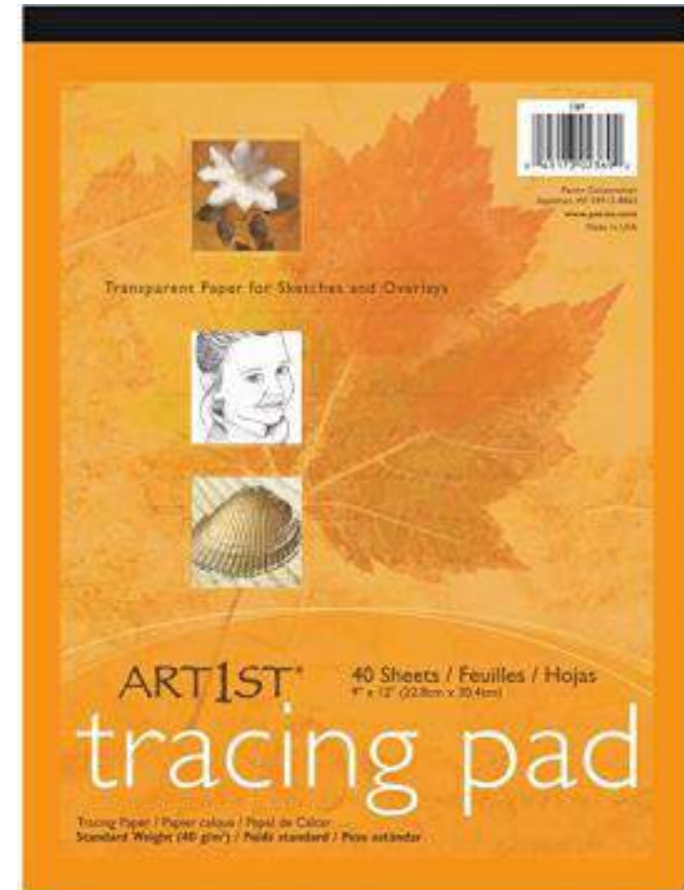


Vicky Konrady

Pattern Adjustment Shortcut

- If you are always making the same pattern adjustment
- Buy a pad of tracing paper at any office supply store
- Have their copy shop cut it into strips of required width
- Paper is cut more neatly and uniformly than by hand
- Having pre-cut strips on hand saves time

Diane McCauley



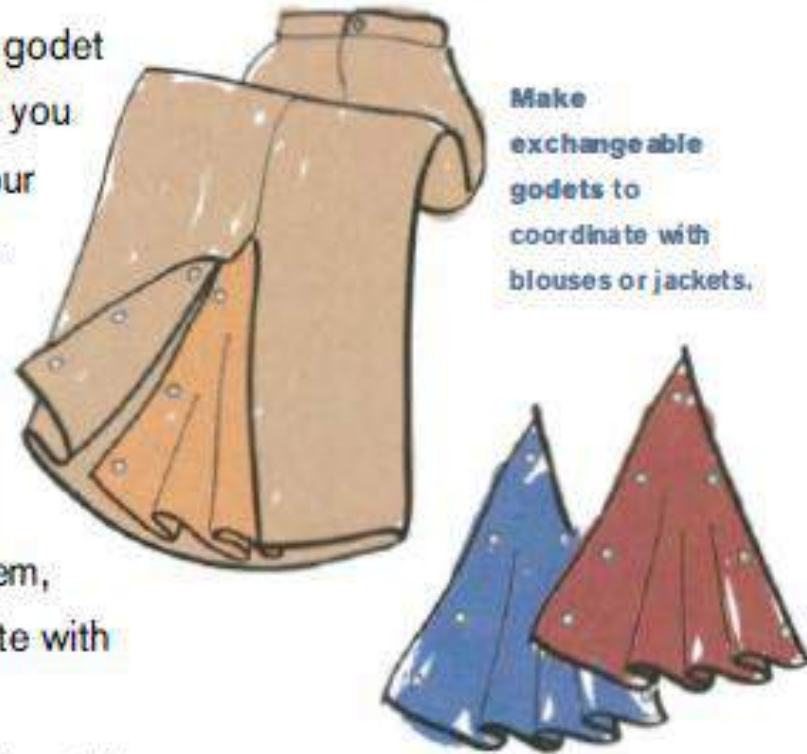
Highlight Pattern Steps

- When a pattern has different instructions for each of its views
- Instructions may go back and forth between views to avoid repeating construction steps
- Highlight the correct set of instructions
- Making a different view; highlight with a different color



Removable godets make for a quick change

Transform the mood of a plain skirt by inserting a removable godet into the garment's slit. As occasions vary, so can the godets you use. To make the pattern, measure the length of the slit in your skirt and add 2 inches for finishing and hemming the edges. Use that dimension to cut a bias triangle of contrasting fabric, then finish the sides and hem the bottom. Sew corresponding snaps to the inner edges of the skirt's slit and the godet edges. Sew the first snap at the top of the slit and enough snaps on each side, between the top and hem, to prevent gaps. So go ahead and make godets to coordinate with different tops to change your look in a snap.



Make exchangeable godets to coordinate with blouses or jackets.

—Beth Wehrman, Maxwell, Ia.

Pretty piping

Adding piping is a great way to accent the lines of a garment, but it can have extra visual punch if you apply a decorative stitch to the bias fabric before insertion.

Once I've selected a stitch and thread combination, I stitch it down the center of the piping fabric and then insert the piping as I typically would. The stitch pattern becomes a decorative touch along the edge of the piping. Sew it down the

middle—or slightly to one side for a totally different look.

I recommend creating or purchasing extra piping for experimentation. There are so many decorative stitches on my machine and so many colorful, decorative threads available that it's fun to play with them to find the right stitch and thread combination.

—Beth Wehrman, Maxwell, Iowa



Pretty Piping

- Example



October/November 2014 – Issue 175

Keep a Sewing Journal

- Record finished projects with date and recipient
- Fabric type/source, include a swatch
- Pattern with view, size and any changes made
- Special techniques used
- Great reference source and future inspiration



Beth Wehrman



Multitasking Hobbies

- Listen to audiobooks while sewing
- No need to give up sewing time to read or reading time to sew!
- Available at public libraries for three weeks

Beth Wehrman





Ready to Shop

- Keep a tote bag ready to go to the fabric store
- Stock with current flyers, coupons, swatches, yardages, a notebook and pen
- Shopping list of needed thread or interfacing
- Helps maximize shopping dollars and time



Beth Wehrman

Bag made by Tracy Feldman



User Friendly Thread Spools

- Having a hard time finding that slit to secure the thread?
- Use a permanent marker and make a mark on the spool
- Much quicker to find in the future

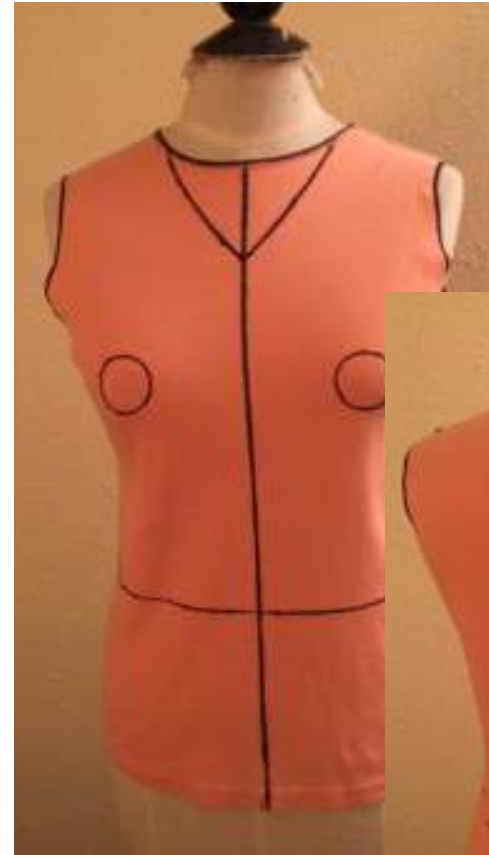
Rita Riskedahl





Establishing Baselines for Pattern Alterations

- Put on a well-fitting knit shirt and have a friend mark specific lines
 - Center front and back
 - Waistline
 - Bust points
 - Armholes
 - Depth of V-neck or crew neck
- Place on mannequin and start making alterations to the tissue pattern
- Much easier than trying to alter the tissue on your body



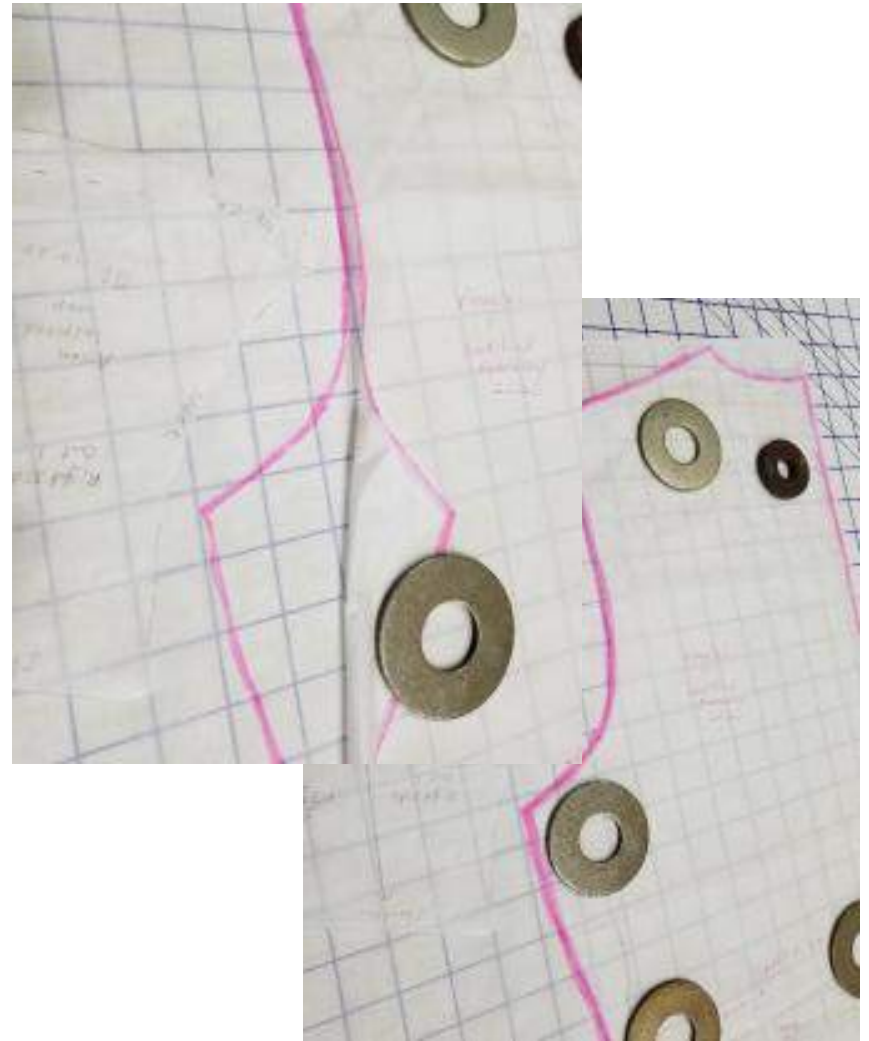
Rita Riskedahl



Making Duplicate Patterns

- When tracing patterns to make duplicates, use a wide highlighter around the outer edge of the pattern piece
- Then cut on the “inside” of the traced colored line
- Less stressful than tracing with a pencil on thin paper

Jean Eells

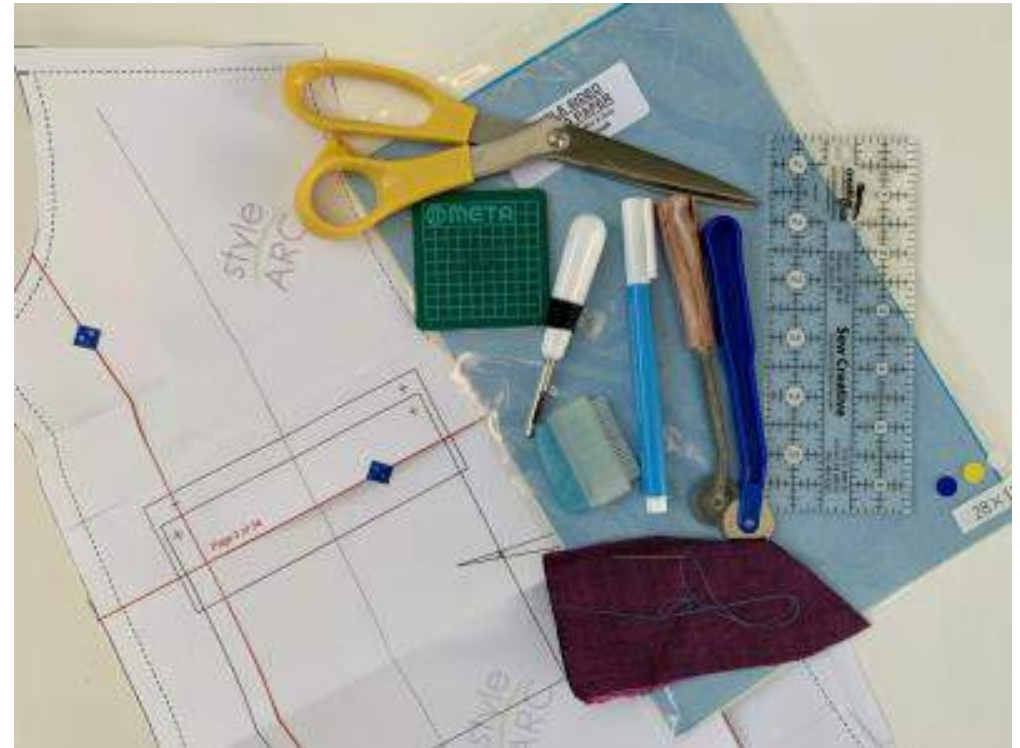




Working with PDF Patterns

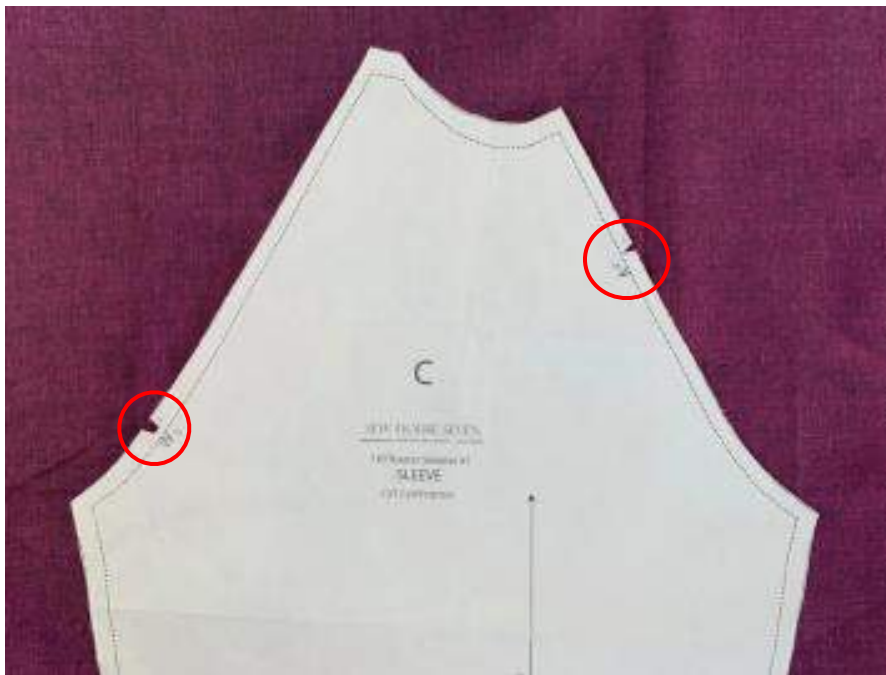
- Standard copy paper is sturdier than tissue and makes transferring pattern markings onto fabric easier

Amy Garrett

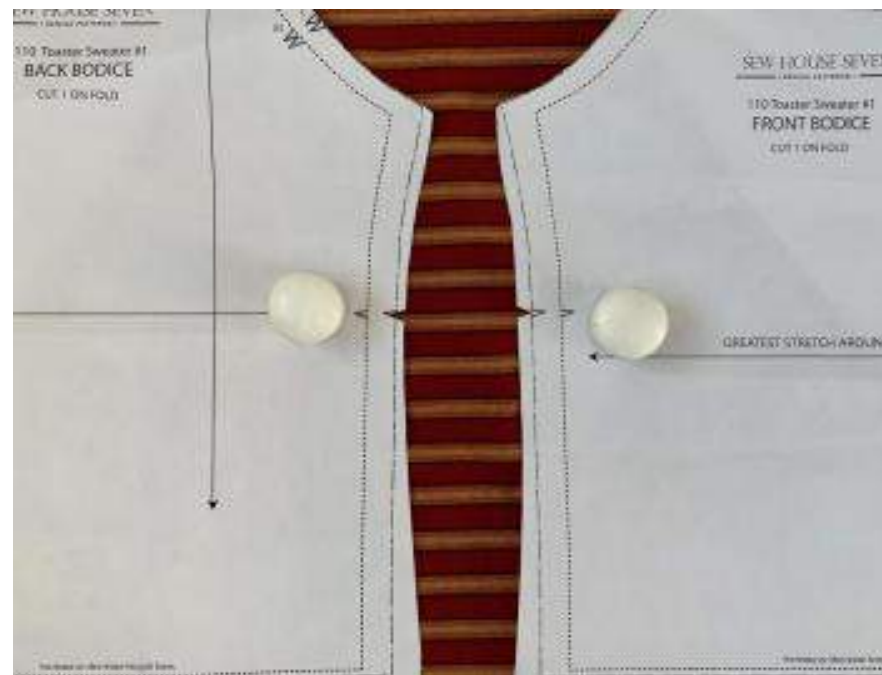




Working with PDF Patterns



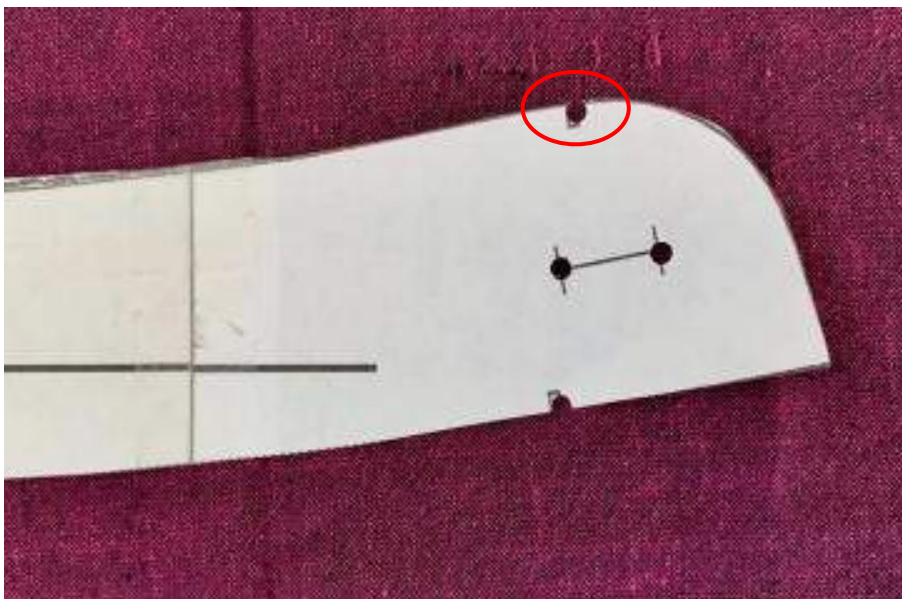
Cut out single or double notches inward



Notches or matching points at the cutting line



Working with PDF Patterns



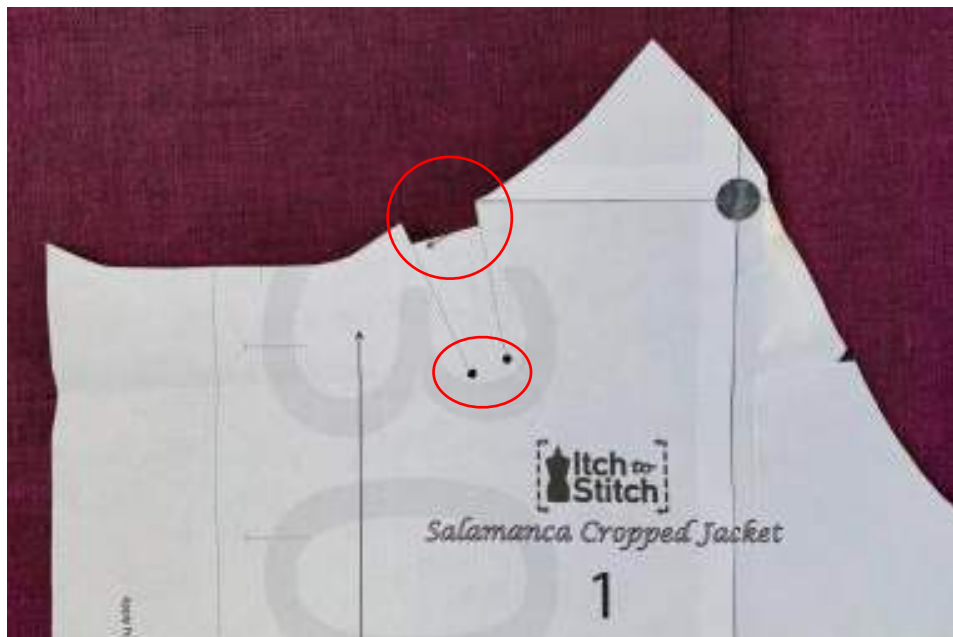
Dots or matching points at or inside the seam line – punch out with an eyelet hole cutter



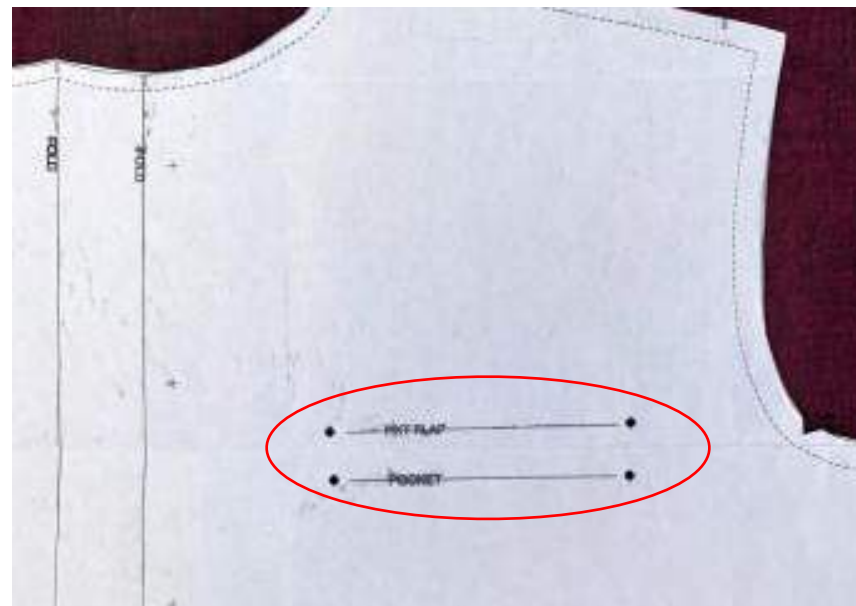
Completely remove darts



Working with PDF Patterns



Pleats – partially remove long or wide pleats, punch out point(s)



Pocket Placement - punch out the intersection of the corner placement lines



Open Forum – Other Member Tips

Type into Chat if you have a tip to share and
Vicky will call on you





Questions?

