



*No Sew Shoes!*

For 18 inch dolls

## You will need:

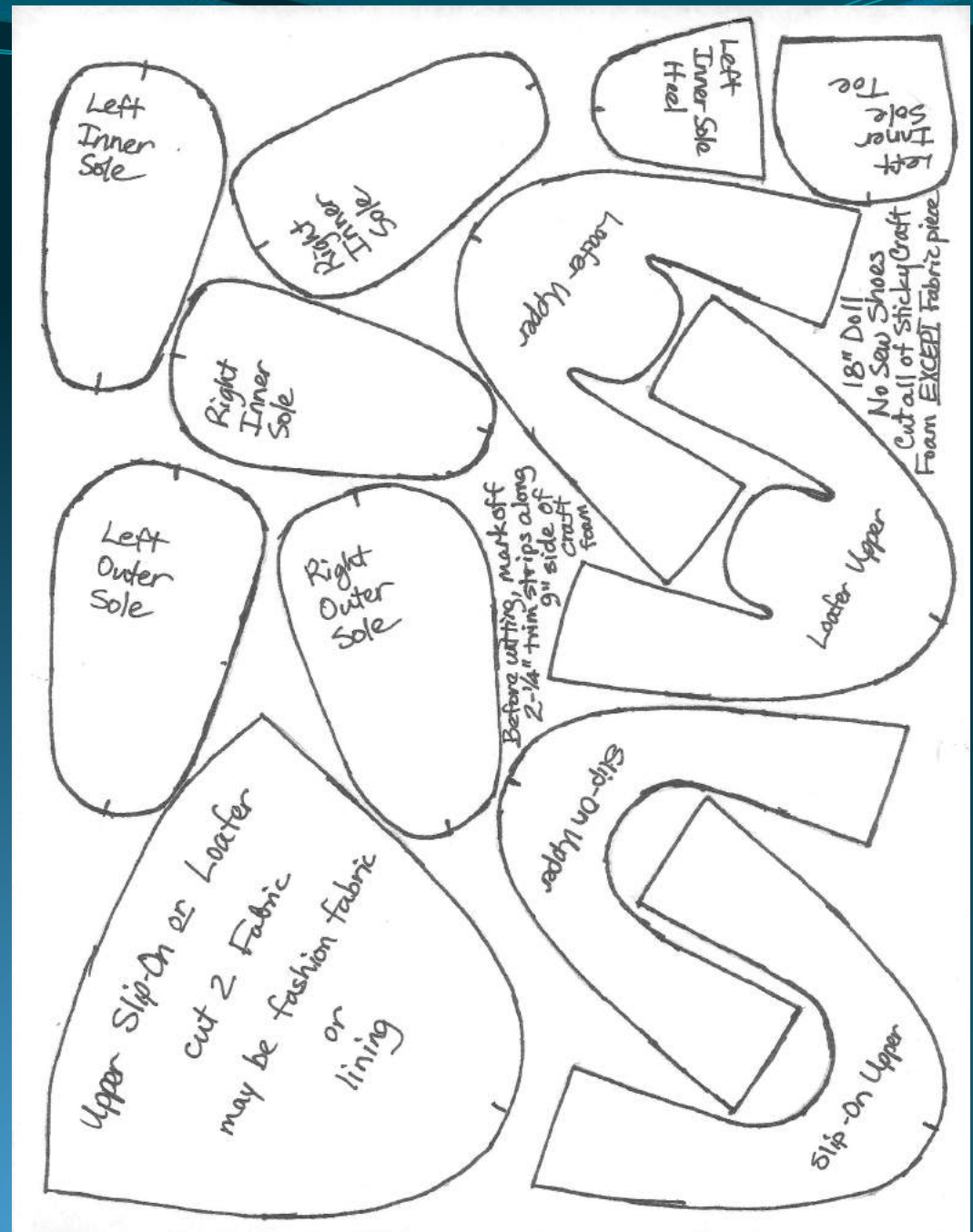
- ✓ 1-6" x 9" sheet sticky back craft foam. Use a color that goes with your doll outfit
- ✓ Ruler – really easy with clear quilter's ruler with parallel and perpendicular lines
- ✓ Pen or pencil
- ✓ (Optional) Double-sided tape
- ✓ Paper scissors
- ✓ Fabric for either the outside of the shoe or the lining
- ✓ Sharp pointed scissor or shears
- ✓ Glue – Fabric-Tac recommended



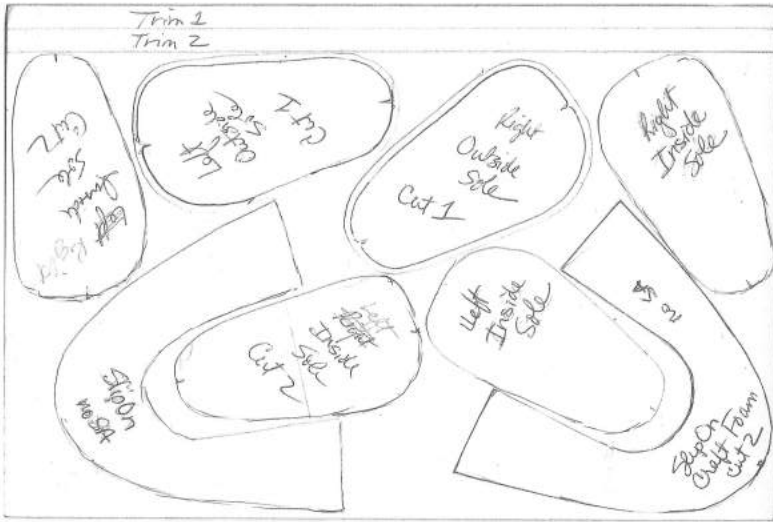
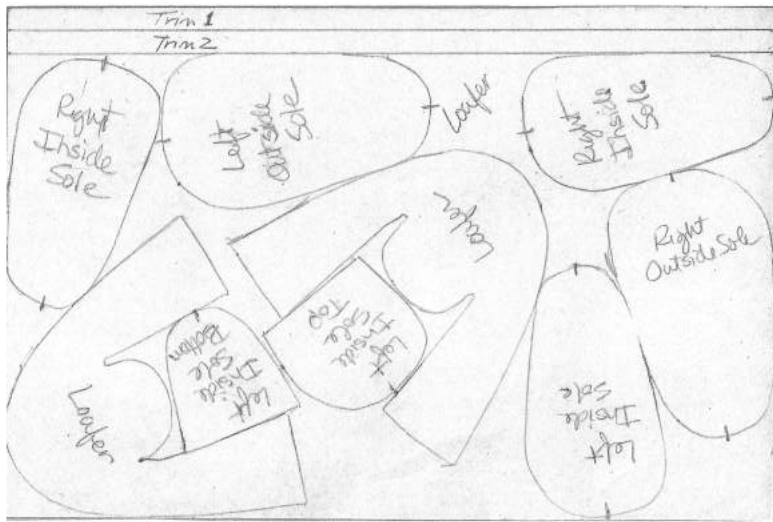
Here's the pattern pieces for "no sew" shoes.

Print these patterns on card stock so you can trace around them easier.

Cut out the pattern pieces with paper scissors.







Notice that the pattern pieces are very close together.

Mark two – ¼ inch strips for the trim pieces on the 9 inch side.

Use double sided tape to hold patterns on the foam, but easy to move as needed.





Cut the slip-on or loafer upper for FABRIC from a fashion fabric if it will be on the outside of the shoe, or a lining fabric if it will be on the inside of the shoe.

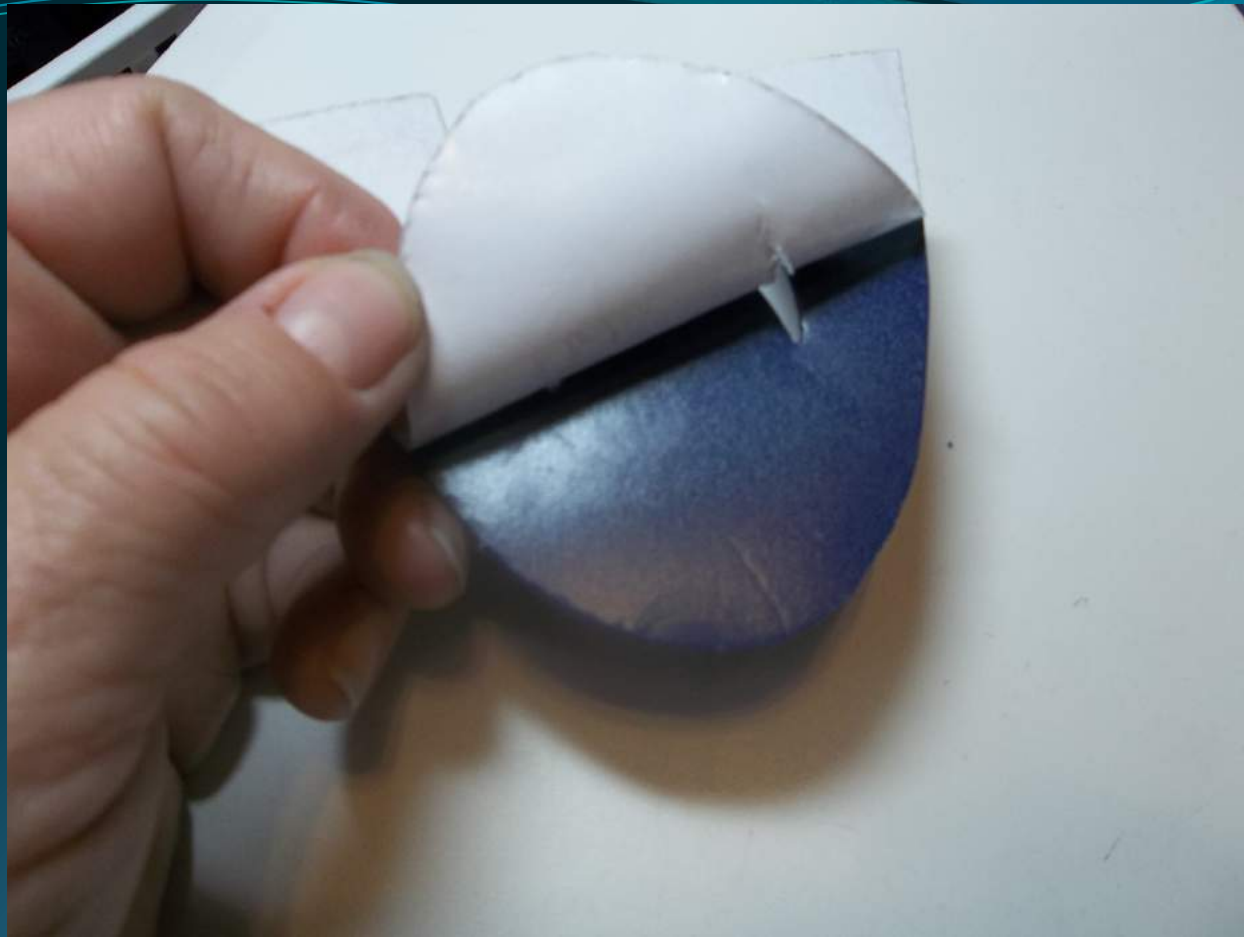
It is cut in a large block to allow for trimming later.

Choose a fabric that is not stiff or ravel easily.



If you want to embellish your shoe tops, do it now.

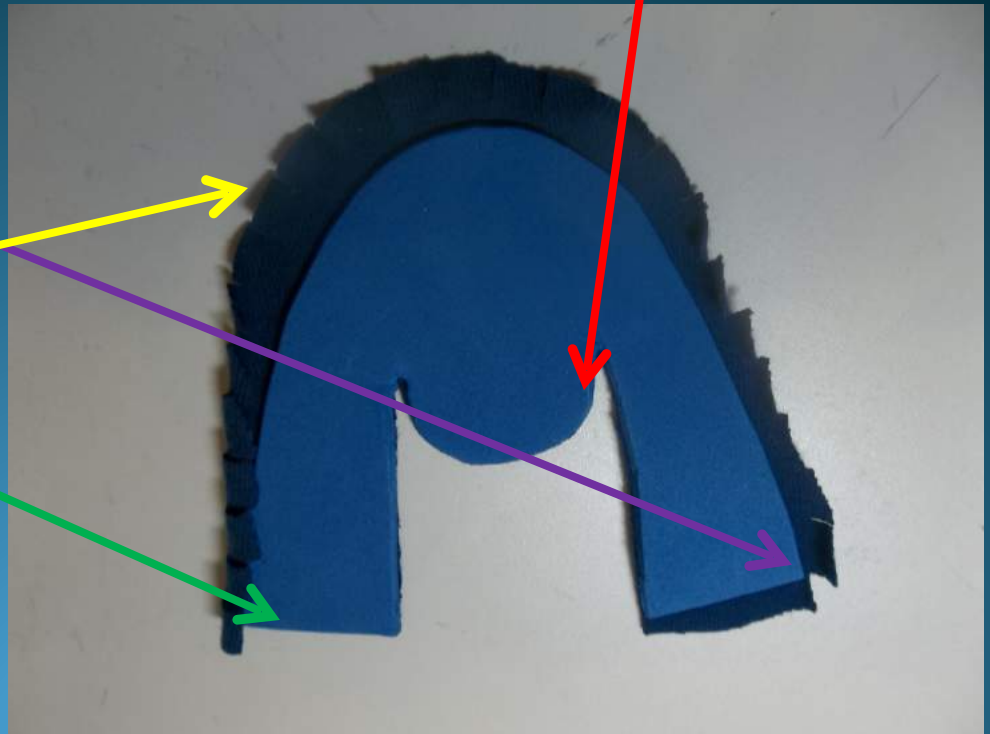




Remove paper from the UPPER craft foam exposing sticky side.

Place sticky side of craft foam upper on the wrong side of fabric upper. Using sharp fabric scissors or shears, trim close to the top of the shoe & one of the center back sides. Trim out the corner of the UNTRIMMED center back at the sole edge.

Notch the SOLE edge of fabric to the craft foam. Cut small triangles so the fabric will not overlap very much when attached to the sole.



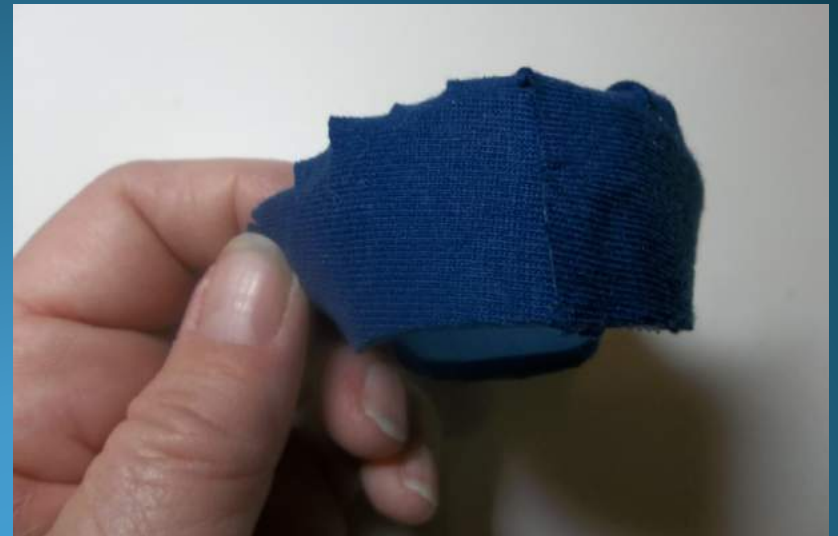
Use ½ inch double sided tape on the CENTER BACK side that is untrimmed. Place the tape so that one edge of the tape is along the edge of the foam (but on the fabric side) and the other edge extends past the seam allowance. Pull back the fabric from the side that is trimmed.



If you prefer, you can use fabric glue, but you must be a neatnik, otherwise the glue might show.



The two **CENTER BACK** edges of the craft foam should meet. This edge is slightly curved, so try to keep the curve in this edge. Fasten the tape to hold the center back edges together.





Use fabric scissors or shears to trim the fabric close to the upper edge .

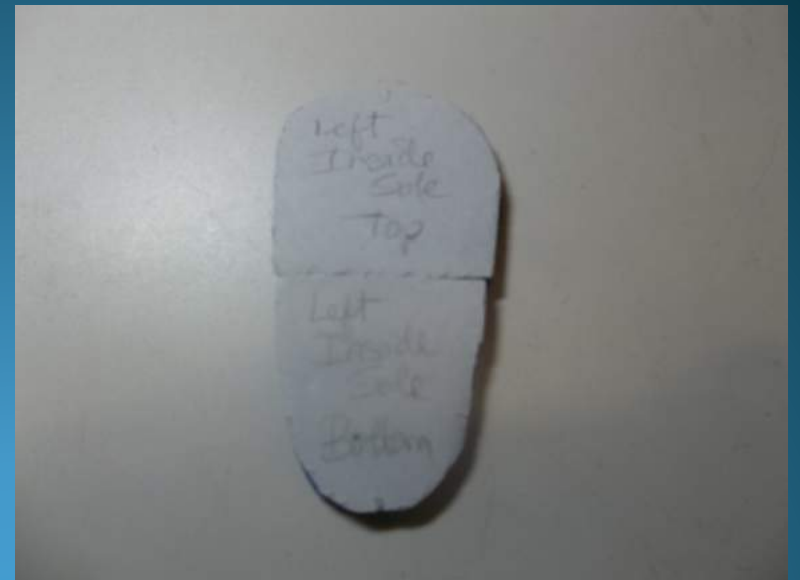
Remove the paper backing from one INSIDE SOLE.

Attach the sticky side to the foam side of the 2<sup>nd</sup> INSIDE SOLE. Be sure you keep right inside soles together and left inside soles together.

With paper scissors, trim the double layer insole so they are even.



If making the loafer, one of the left INSIDE SOLE patterns is split. Remove the paper from the full left INSIDE SOLE and attach the split left INSIDE SOLE to the sticky side of the craft foam. This keeps the full sole on the side that is visible when done.





Remove paper from the bottom side of the **INSIDE SOLE** stack. Starting at center back seam, fold the seam allowance of shoe upper to the sticky side. Keep the edge of the insole on the inside edge of the upper. This is the trickiest part of the shoe. Take your time!





Remove paper from the  
**OUTSIDE SOLE.** Place  
the sticky side of the  
outside sole to the sticky  
side of the inside sole.

Keep the right outside  
sole with the right inside  
soles!!

The outside sole is slightly larger than the  
inside sole so it should cover the entire inside  
sole and the edge of the upper. Trim with  
paper scissor as needed.

Remove the paper backing from the trim piece. Starting at center back, attach trim to the bottom edge of the upper, covering the seam and keeping the bottom edges of the trim and the outer sole even.



As you get to the center back again, use paper scissors to trim excess trim piece.

Secure this back seam with fabric glue as the sticky back does not want to stay on this curved edge.



Repeat directions for  
the opposite shoe and  
you have a pair of  
shoes with no  
sewing.

Who'd have thunk  
it?

