

Installing a sleeve placket on a classic shirt.

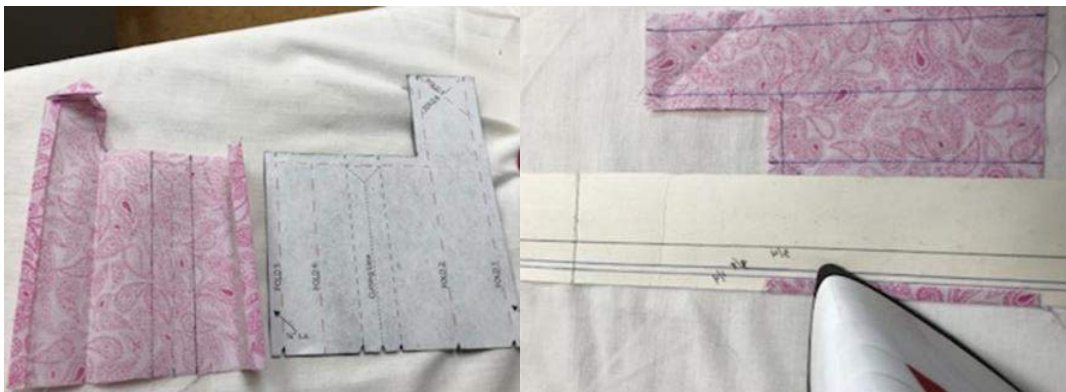
There are a lot of steps, but with careful preparation and simple sewing, it is surprisingly easy to create a professional-looking sleeve placket.

Precision is important.

- a. Trace the placket pattern pieces carefully. Remember to cut both a left and a right placket.
- b. *Special note: If you want the placket to match the pattern on the sleeve (e.g., stripes), you will need to place a vertical line through the peak of the longer side of the placket pattern. Use this line to match your sleeve and placket fabrics.*
- c. If the right (RS) and wrong sides (WS) of your fabric aren't obvious, be sure to mark them on each pattern piece.
- d. If your fabric is lightweight, you may want to apply interfacing to the WS of the placket; otherwise, use heavy starch or washout liquid/spray fabric stiffener to aid in making precise folds.

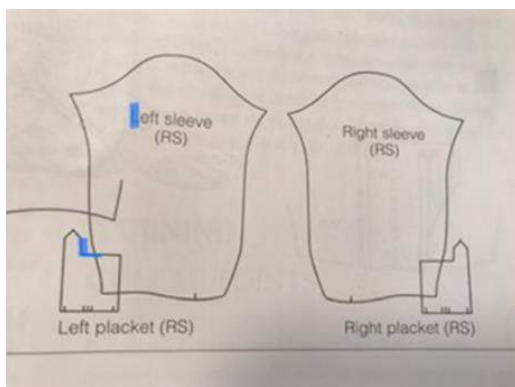
Marking and preparing the plackets

- e. Mark the folds and sewing lines on the WS (on the interfacing, if used) of each placket.
- f. Use a hem template or guide (manilla folder with ¼ inch mark) to get precise folds.
- g. Press each fold as you go.
- h. It is best to make all the folds before starting to sew.



Matching the correct plackets to Left and Right Sleeves

- i. Place the pattern pieces RS up for both the sleeves and the plackets.
- j. **Trick:** Look for the L of the top of the sleeve placket to match the Left sleeve.



from David Coffin

Sewing the plackets to the sleeves (All examples shown are for the right sleeve.)

- k. With the right sleeve WS up, place the right side of the placket WS up, matching the center cut line of the placket with that of the sleeve pattern.
- l. Sew around the box using a short stitch length.
- m. Press each of the sides toward the box.
- n. Cut up through the center and into the corners. Cut as close as possible to corner stitches.



- o. Pull the placket through to the RS of the sleeve.
- p. Make sure your corners are crisp and make a nice even opening.
- q. Fold the short side of the placket so that it covers the raw edges of the box aligning it so it just covers the stitching.
- r. Stitch close to the edge.



- s. Flip the short side you just stitched back toward the center.
- t. Make sure all the raw edges at the top are folded upward.
- u. Flip the tall pointed side over the box and align the open edge over raw edges just covering the stitching.
- v. Check the WS to make sure all the raw edges at the top of the box are tucked in. You may want to baste in place.



- w. Finally, stitch from the bottom edged up over the point and back down to where the box begins forming a rectangle.



Voila – A perfect placket for a classic tailored shirt.

For more information:

Open YouTube and search for *Shirt Plackets*. You will find multiple video examples of the classic shirt placket plus other variations. In addition, there are examples for simple blouse plackets.

David Coffin (deceased) has both books and DVDs with detailed instructions on how to make classic shirts as well as variations. If you are going to make classic shirts for men or women on a regular basis, I would highly recommend his books.